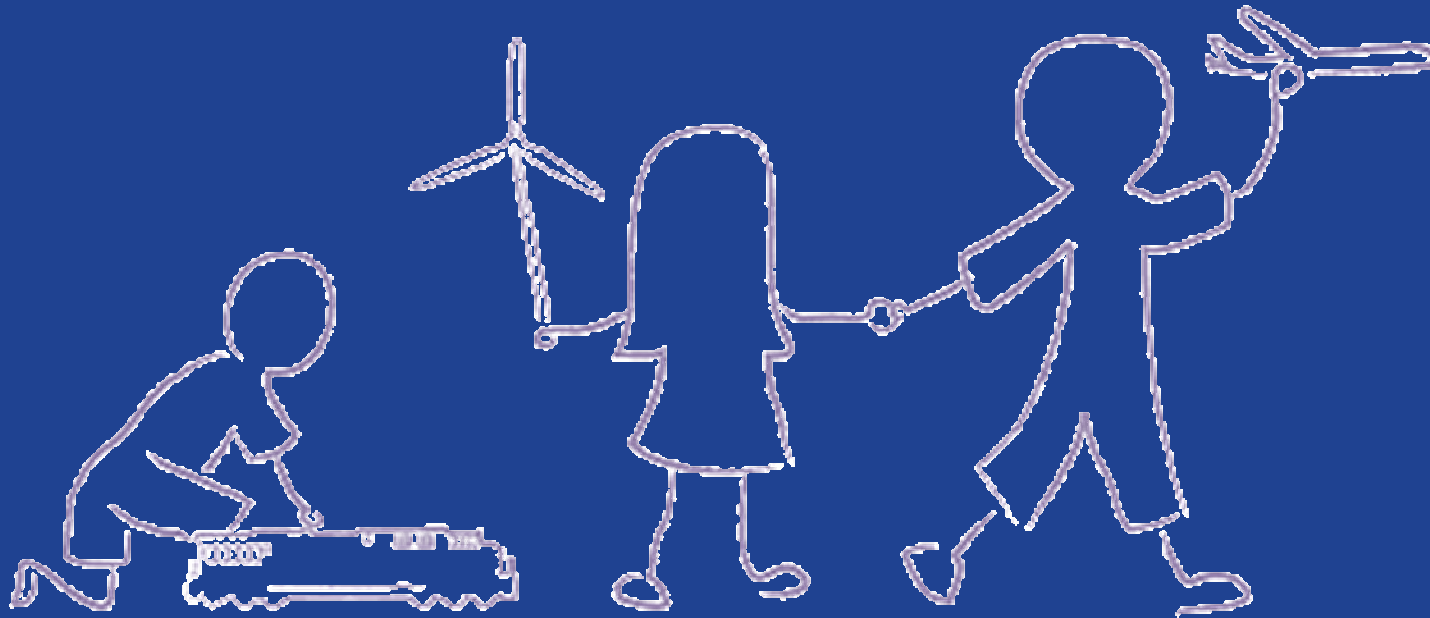


GE Brazil CSR & Sustainability



GE Brazil: CSR & Sustainability



GE Foundation

A Letter from Bob Corcoran

From Harlem to Shanghai and Mexico City to Delhi, we are reaching out to hundreds of GE communities around the globe to support innovative programs aimed at spurring educational opportunity and community success. Whether championing minority education or improving the capacity of schools to prepare tomorrow's workforce, GE's culture of leadership, performance, accountability and engagement contribute in unique and powerful ways.

Almost 50 years ago, GE Foundation gave one of our first grants to the United Negro College Fund. Today our commitment to education remains at the forefront of our investments and we continue to drive programs that improve educational access and achievement for disadvantaged youth.

GE Foundation also works to solve some of the world's most difficult problems. In coordination with its partners, it supports U.S. and international education, developing health globally, the environment, public policy, human rights and disaster relief. In addition, GE Foundation supports GE employee and retiree giving and involvement in GE communities around the world. In 2009, the entire GE family — including businesses, employees, retirees and GE Foundation — contributed more than an estimated \$220 million to community and educational programs, including more than \$100 million from GE Foundation.

As we continue to seek innovative ways to respond to pressing needs, we look forward to working closely with schools and organizations also committed to building strong communities. The impact of these investments underscores the company's commitment to strategic philanthropy and corporate citizenship. By applying the very best of who we are — our talent, ideas, skills, and inspiration — we will do our best to make a difference in this world.

Robert L. Corcoran
President & Chairman, GE Foundation



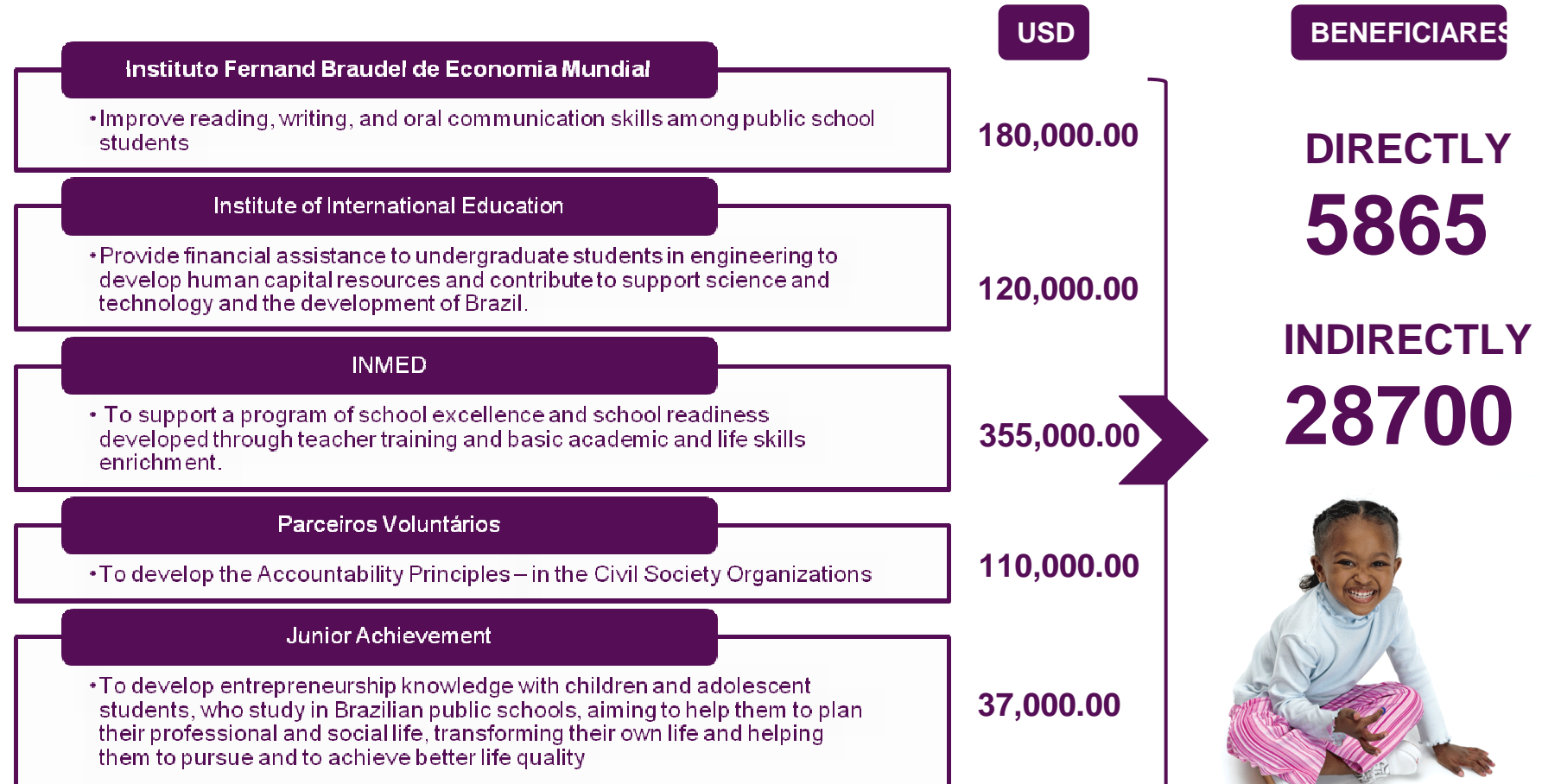
GE Foundation



imagination at work

GE Foundation - Brazil

EDUCATION 2010



GE Volunteers- Brazil

To facilitate and support volunteering activities that improve life in GE communities.

Good for the community — direct benefit to people who need it most; builds employee-community rapport; improves overall quality of life in community

Good for the volunteer — more than just enjoyable and satisfying ... builds skills; puts things into perspective; shares talents; enhances networks

Good for GE — develops caring, inclusive, and accountable leaders ... with integrity; builds partnership with the community and enhances corporate citizenship reputation



www.gevolunteers.com

90 thousand campaign – GE Volunteers Results

- 104.100 books donated
- 122.296 kilos of food donated
- 108.478 volunteer hours donated
- 109.746 people benefited
- 237 NGOs benefited
- 47 cities impacted



três ideias
noventa mil ações



Sustainability

ecomaginationSM

... green is green



1 Double
R&D...
\$1.8 Billion

2 Grow
Revenues...
\$25 Billion

3 Reduce
Emissions

4 Report
Progress

Ethanol for power generation

IN ONE YEAR:

- 25 million liters of water saved
- 50% reduction of particulate matter emissions
- 150 million metric-ton reduction of aldehyde emissions during the trial period

Petrobras, Brazil's national energy company, sought GE's help in diversifying its energy sources, while allowing greater flexibility in power plants and building a foundation for future technology and innovation.

The result was the world's first sugarcane-based ethanol power plant, powered by GE's LM6000 PC aeroderivative gas turbines. The Juiz de Fora Power Plant, serving 150,000 people in southeastern Brazil, is a simple-cycle, natural gas plant with a total capacity of 87 MW. The plant has two LM6000 PC gas turbines, with GE-modified combustors that enable the use of ethanol as well as natural gas. This dual-fuel capability enhances the plant's energy security and reliability by providing a valuable alternative fuel source.

Petrobras selected the aeroderivative gas turbine for this project because of its demonstrated reliability and high efficiency, and its ability to accommodate alternative fuels, including biodiesel, naphtha and many others.



LM6000 Gas Turbines Modified for Ethanol Sweet Success for Brazil

World's first sugarcane-based ethanol power plants bring cleaner power to Brazil.

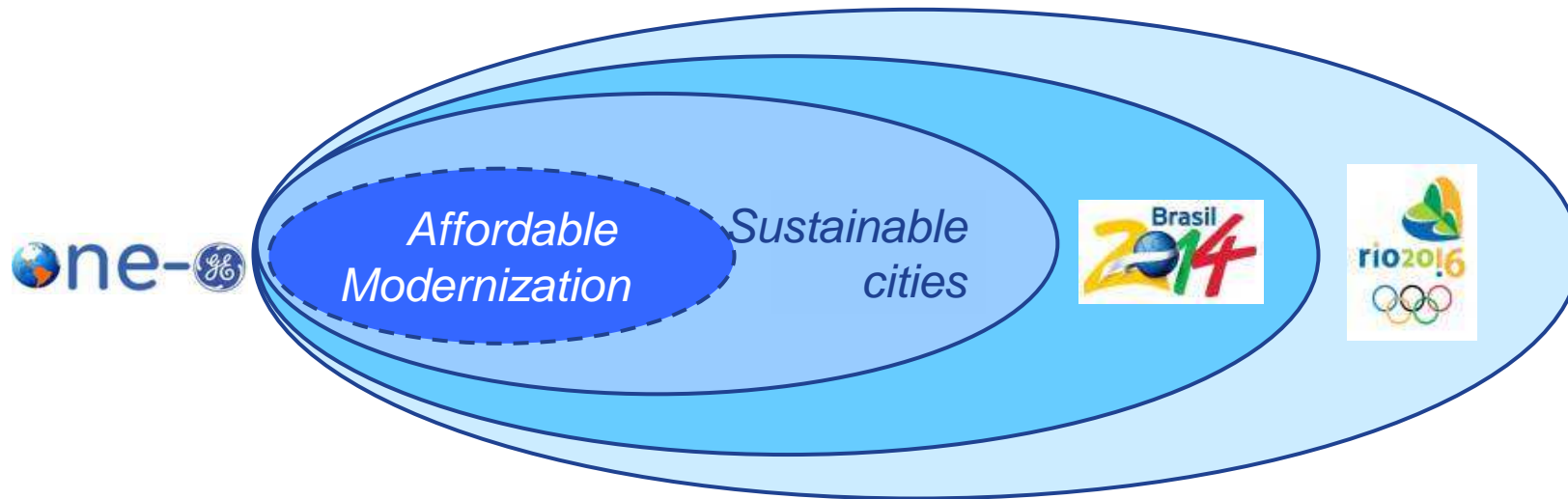


View this story online:
<http://www.ecomagination.com/progress/innovation/gas-engine/lm6000-gas-turbines-modified-for-ethanol/>

OVERVIEW

INNOVATION

Rio 4 Real ... scalable solution



City strategy...unique value proposition



Becoming the City's partner of choice for promoting sustainable growth and preparing Rio for the future

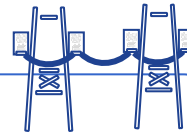
Affordable and sustainable Rio de Janeiro



Build

Sustainable urbanization with lower carbon footprint

- Green buildings
- Efficient stadiums
- Education for sustainability



Power

Renewable power sources with increased system efficiency

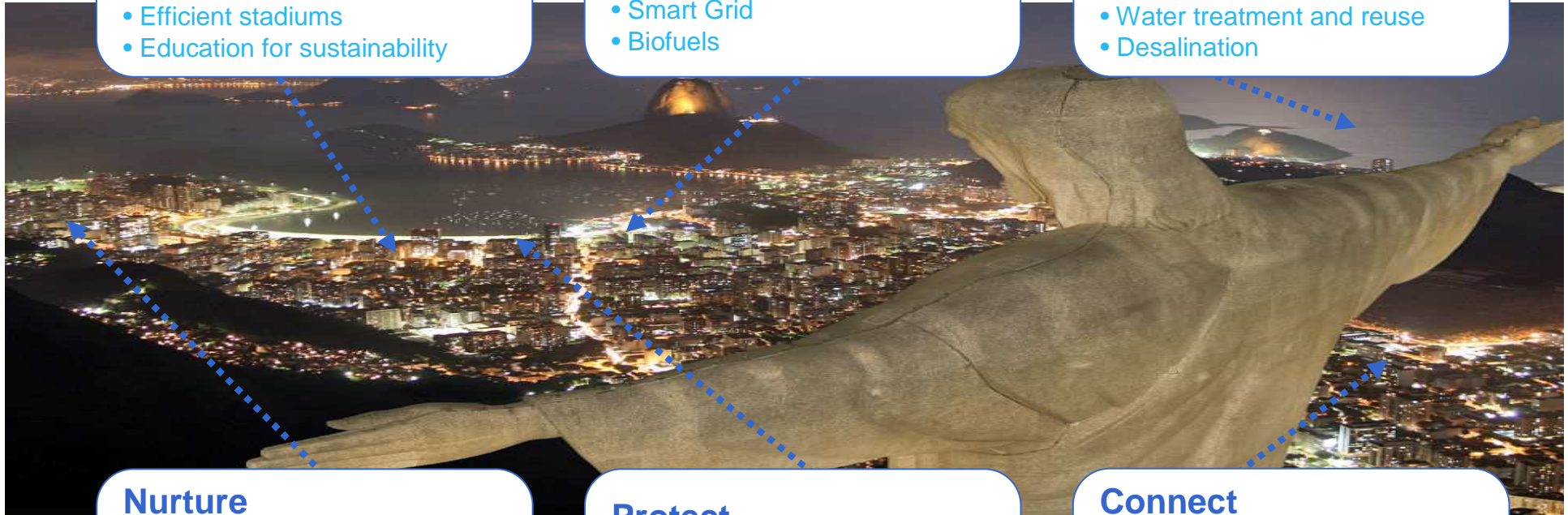
- Waste to energy
- Smart Grid
- Biofuels



Sustain

Access to potable water and reduced environmental impact

- Sanitation treatment
- Water treatment and reuse
- Desalination



Nurture

Expanded access to health with better quality and affordable cost

- Portable equipment
- Mobile units
- Telemedicine



Protect

Public safety thru more efficient illumination

- Public illumination of streets and tunnels



Connect

Safer, more reliable and efficient urban mobility

- Efficient LED transit signaling
- Air traffic system
- Metro signaling



imagination at work

Rio 4 Real ... time to deliver

GE Solutions

What we can deliver

Partners



Cardiomobile (mobile unit for cardiovascular diagnosis)

Increase access to diagnosis to reduce treatment costs



Waste management stations

Transform waste (a problem) in a clean energy source (a solution)



Smart Grid

Increase energy efficiency and minimize losses



Sustainable sewage treatment

Increase sanitation treatment allowing renewable energy source



Local partnerships... deliver a complete experience thru innovation

Thank you.

